

HTRG01K to HTRG04K gear datasheet.



This datasheet shows our default types but there are other options.
Ask JVL in case you need something different.

Types:

Distribution of nominal torque		M _{n2} [Nm]		
[i]	1	2	5	
KR 010	10	7	3	
KR 020	24	15	10	
KR 030	55	37	22	
KR 040	120	85	45	

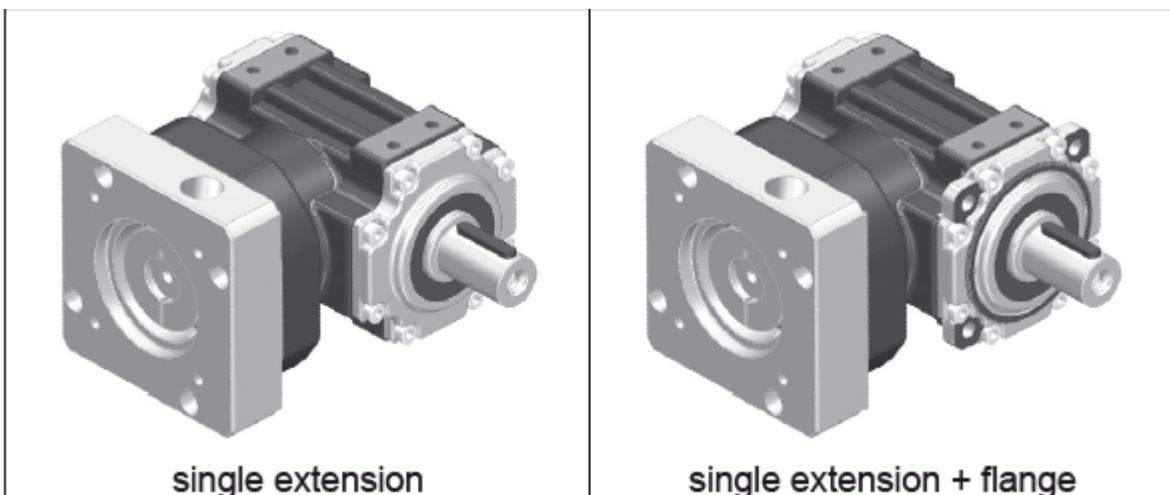
Lubrication:

duty	HTRG01K - HTRG04K
S1 (continuous)	Synthetic oil viscosity ISO VG 220
S5 (intermittent)	NLGI grease consistency 00

Flange and versions:

LP

LQ





Technical specifications:

HTRG01K:

	M_{n2} [Nm]	M_{a2} [Nm]	M_{p2} [Nm]	C_t $\left[\frac{Nm}{arcmin} \right]$	n_1 [min ⁻¹]	$n_{1 max}$ [min ⁻¹]	φ_s [arcmin]	η %
$i = 1$	10	14	20	0.5	2000	4000	8'	97
$i = 2$	7	10	15	0.4	2500	5000		
$i = 5$	3	4	6	0.2	3000	5000		

HTRG02K:

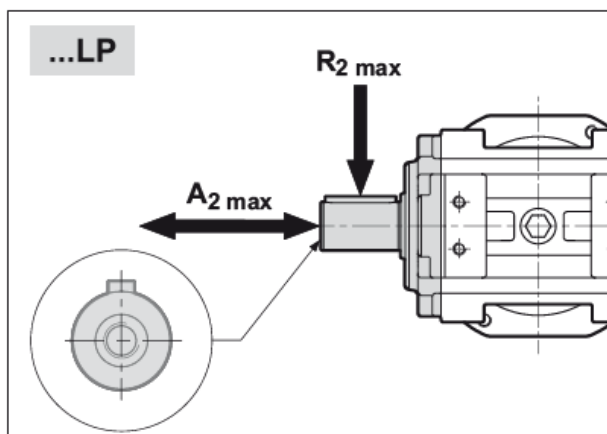
	M_{n2} [Nm]	M_{a2} [Nm]	M_{p2} [Nm]	C_t $\left[\frac{Nm}{arcmin} \right]$	n_1 [min ⁻¹]	$n_{1 max}$ [min ⁻¹]	φ_s [arcmin]	η %
$i = 1$	24	35	50	1.4	2000	4000	8'	97
$i = 2$	15	21	30	1.1	2500	5000		
$i = 5$	10	13	20	0.7	3000	5000		









HTRG03K:

	M_{n2} [Nm]	M_{a2} [Nm]	M_{p2} [Nm]	C_t $\left[\frac{Nm}{arcmin} \right]$	n_1 [min ⁻¹]	$n_{1 max}$ [min ⁻¹]	φ_s [arcmin]	η %
$i = 1$	55	75	110	4	1500	3500	8'	97
$i = 2$	37	52	75	3	2000	4500		
$i = 5$	22	29	45	2	2800	4500		

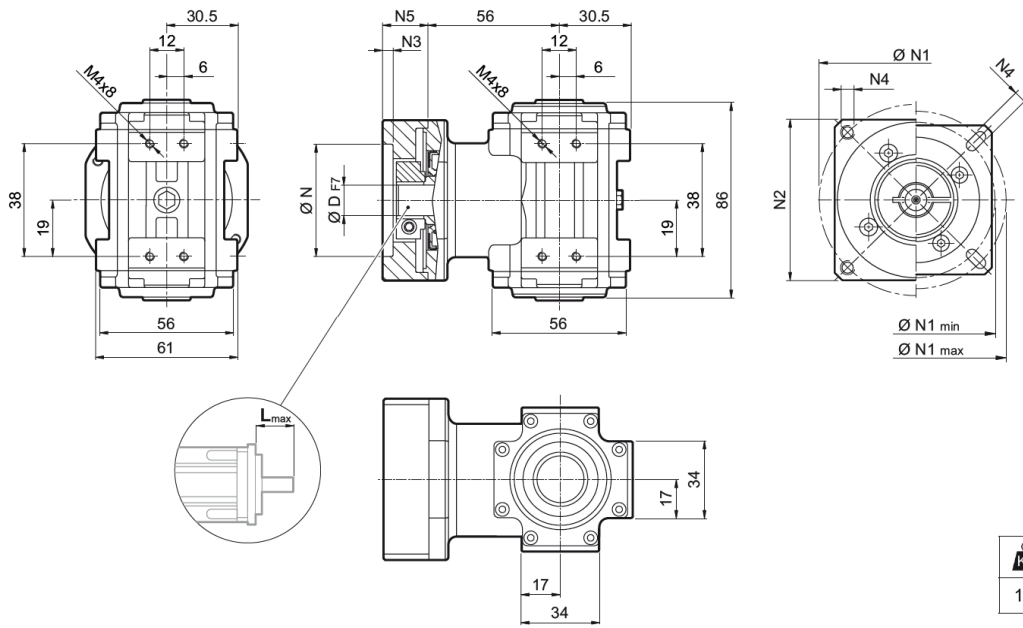
HTRG04K:



	M_{n2} [Nm]	M_{a2} [Nm]	M_{p2} [Nm]	C_t $\left[\frac{Nm}{arcmin} \right]$	n_1 [min ⁻¹]	$n_{1 max}$ [min ⁻¹]	φ_s [arcmin]	η %
$i = 1$	120	170	240	11	1500	3500	8'	97
$i = 2$	85	120	170	9	2000	4500		
$i = 5$	45	60	90	5	2500	4500		



				
		$R_{2 \max}$ [N]	$A_{2 \max}$ [N]	$A_{2' \max}$ [N]
KR 010	SB 	1000	—	200
KR 020	SB 	1500	—	300
	HB 	3000	1500	600
KR 030	SB 	2000	—	400
	HB 	4000	2000	800
KR 040	SB 	3000	—	600
	HB 	5500	2750	1100

HTRG01K* dimensions:



		N	N1 min max	N2	N3	N4	N5	L _{max}
--	---	---	-----------------	----	----	----	----	------------------

NEMA23 motor:

38B	6	6.35	7	8	9	9.52	10	11	12	12.7	-	38.1	66.6	60	3	M4x10	18	25
------------	---	------	---	---	---	------	----	----	----	------	---	------	------	----	---	-------	----	----

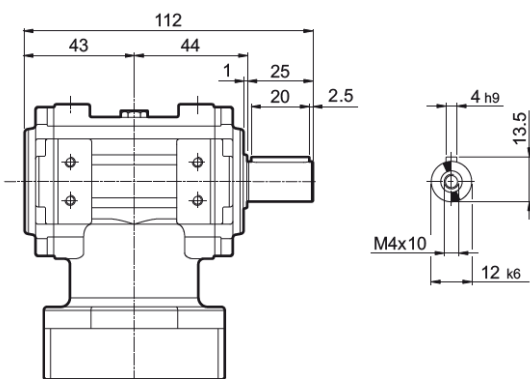
MAC400 motor:

50C	6	6.35	7	8	9	9.52	10	11	12	12.7	14	50	70	60	3	M4x10	23	30
------------	---	------	---	---	---	------	----	----	----	------	----	----	----	----	---	-------	----	----

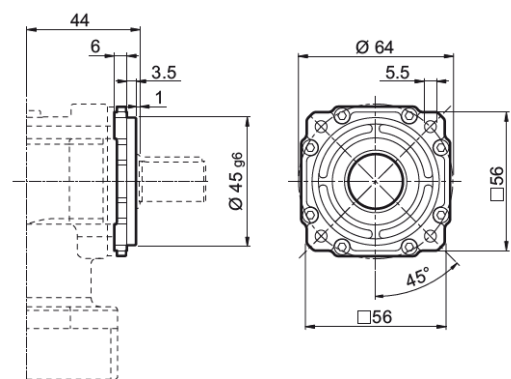
NEMA34 motor:

73A	6	6.35	7	8	9	9.52	10	11	12	12.7	14	73	98.4	85	3	M5x12	25	32
------------	---	------	---	---	---	------	----	----	----	------	----	----	------	----	---	-------	----	----

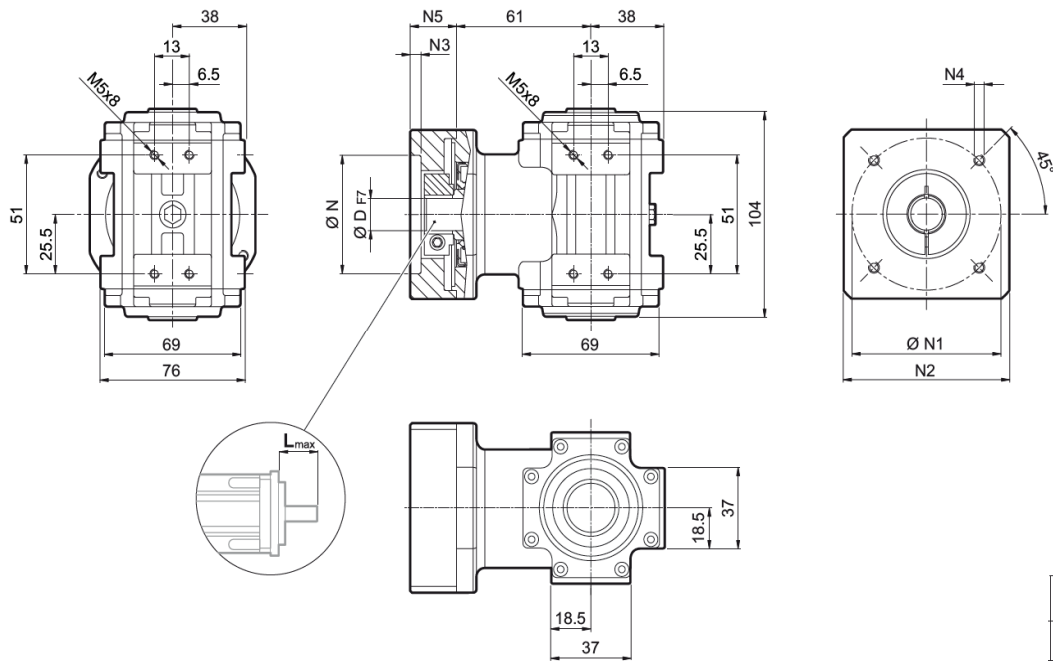
LP type



LQ type



HTRG02K* dimensions:



		N	N1	N2	N3	N4	N5	L _{max}
--	--	---	----	----	----	----	----	------------------

MAC400 motor:

50C1	8	9	9.52	11	12	12.7	14	-	-	-	-	50	70	80	4	M4x10	34	40
------	---	---	------	----	----	------	----	---	---	---	---	----	----	----	---	-------	----	----

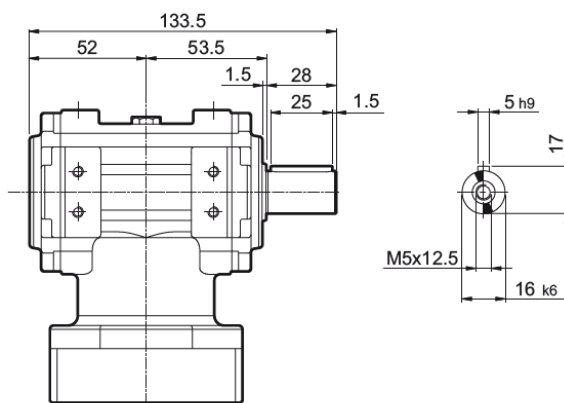
MAC800 motor:

70B1	8	9	9.52	11	12	12.7	14	15.875	16	17	19	19.05	70	90	80	4	M5x16	34	40
------	---	---	------	----	----	------	----	--------	----	----	----	-------	----	----	----	---	-------	----	----

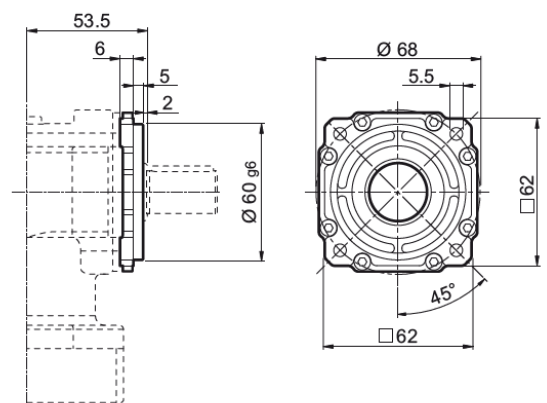
NEMA34 motor:

73A1	8	9	9.52	11	12	12.7	14	-	-	-	-	73	98.4	85	4	M5x16	34	40
------	---	---	------	----	----	------	----	---	---	---	---	----	------	----	---	-------	----	----

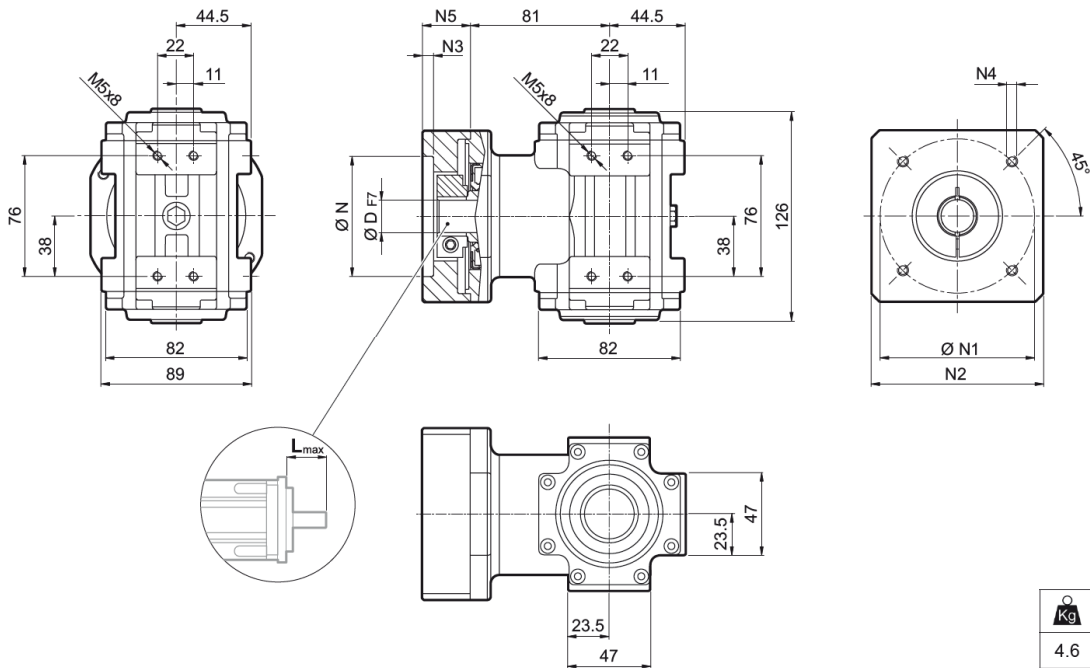
LP type



LQ type



HTRG03K* dimensions:



		N	N1	N2	N3	N4	N5	Lmax
--	---	---	----	----	----	----	----	------

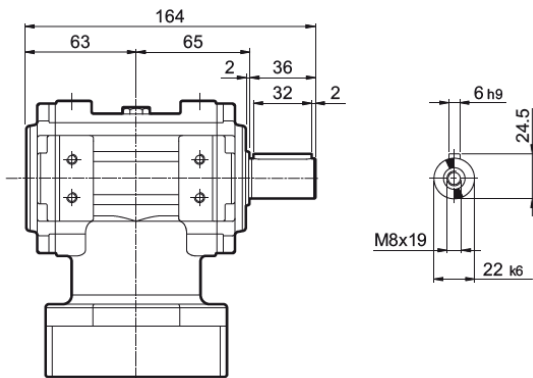
MAC800 motor:

70B1	11	12	12.7	14	15	15.875	16	19	-	-	70	90	100	6.5	M5x12	28	40
------	----	----	------	----	----	--------	----	----	---	---	----	----	-----	-----	-------	----	----

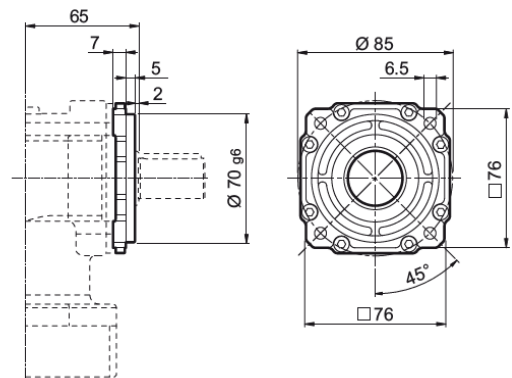
MAC1500/-3000/-4500 motor:

110B1	11	12	12.7	14	15	15.875	16	19	22	24	110	145	120	6.5	M8x20	48	60
-------	----	----	------	----	----	--------	----	----	----	----	-----	-----	-----	-----	-------	----	----

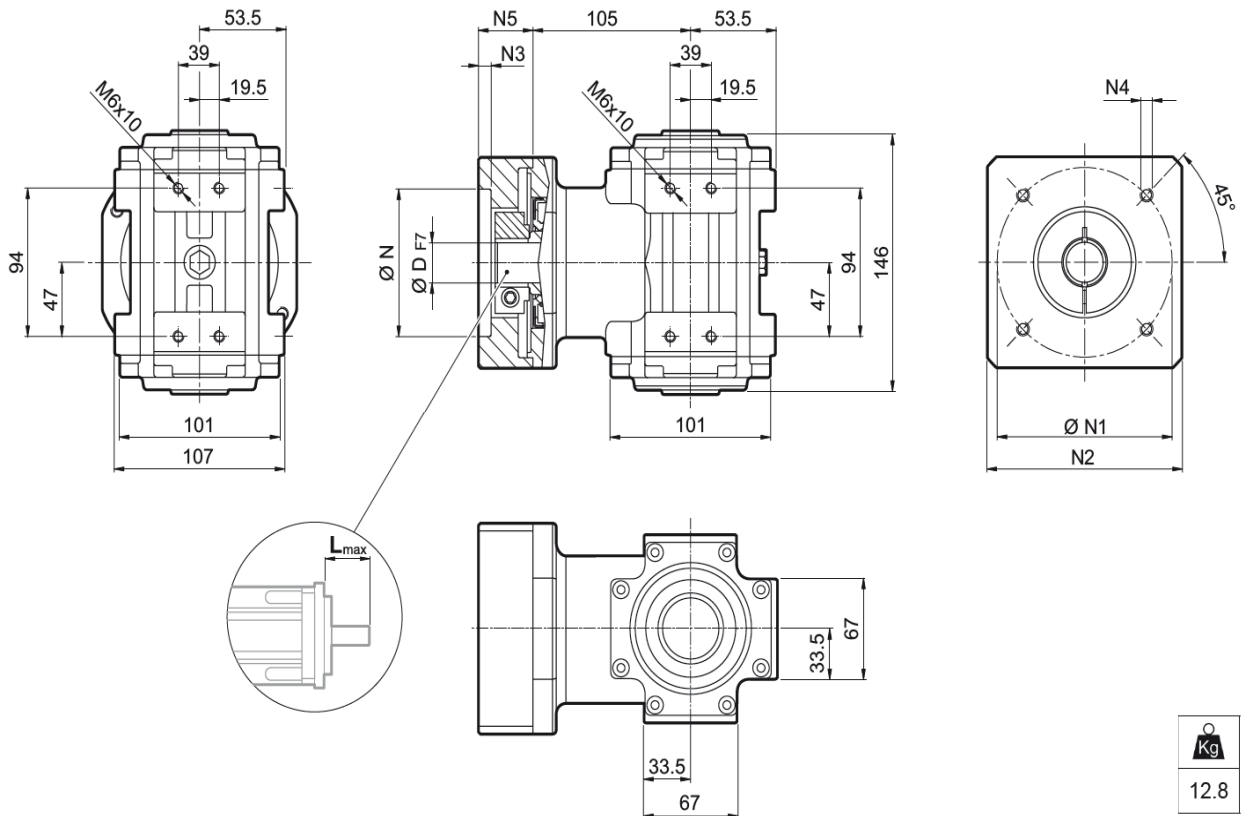
LP type





LQ type



HTRG04K* dimensions:

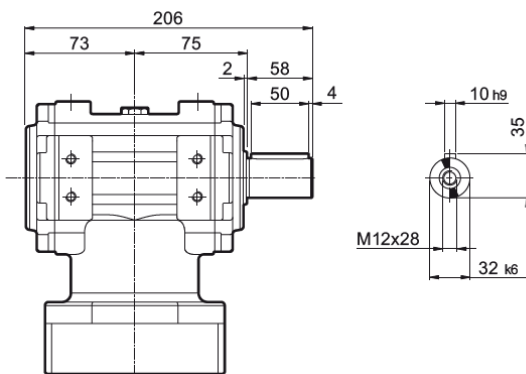


		N	N1	N2	N3	N4	N5	L _{max}
---	---	---	----	----	----	----	----	------------------

MAC1500/-3000/-4500 motor:

110B1	14	15.875	16	19	22	24	-	110	145	130	6.5	M8x20	49.5	60
-------	----	--------	----	----	----	----	---	-----	-----	-----	-----	-------	------	----

LP type



LQ type

